

Two padded top handles

Padded and protective 15" laptop sleeve in large main compartment

Front compartment offers mesh organization and secure-zip pocket

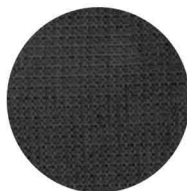


NF0A52S6

Product Features:

- 600D 50/50 polyester/recycled polyester with non-PFC DWR finish
- 100% recycled trim
- FlexVent™ suspension system with a flexible yoke built from custom injection-molded shoulder straps, padded back panel, and breathable lumbar panel
- Backpack stands on its own for easy loading and unloading
- Two exterior water bottle pockets
- 360-degree reflective recycled trim for enhanced visibility

Fabric Features/Benefits:



DURABLE WATER REPELLENT:
DWR is applied to the face of the fabric to provide the first line of defense against wet weather..



RECYCLED CONTENT:
Made from post-consumer, recycled content.

MEDIA COMPATIBLE:
Dedicated, highly protective laptop compartment.

FlexVent™ BACK PANEL:
Airflow channels with breathable mesh and custom-injected shoulder straps

Available Colours and PMS Colours

Textile fabric colours are subject to dye lot variation and will not be exact match to print pantone reference

BLACK



Black C

The North Face® products may not be resold without embellishment.

To protect its reputation and identity, The North Face® reserves the right to prohibit the addition to any The North Face® garment and trademark name, design or logo of an organization, business, school or team (or for an individual or other entity) that does not meet the high standards of the brand. Please contact your representative with any questions. The decoration of any The North Face® garment with a mark, name, design or logo that is obscene, vulgar, advocates or displays violence or illegal activity, and/or relates to the firearms and ammunition, tobacco, sex, and pornography industries is expressly prohibited. The registered owner of the The North Face® trademarks is THE NORTH FACE APPAREL CORP

NF0A52S6 - THE NORTH FACE® Stalwart Backpack

Measurements (in inches)

Approx. Dimensions	18"h x 11"w x 8"d
Volume in Cu In./ Litres	1,587 cu. in./26 L
Weight	1.7 lbs./0.77 kg
Materials	600D poly with non-PFC DWR
Laptop Sleeve	11"h x 10.5"w x 2"d, fits most 15" laptops

Decoration Area

	LOCATION
Embroidery	6" diam
Screen	7"h x 6"w
Hoop Size	15 cm
Description	Top Front Pocket

